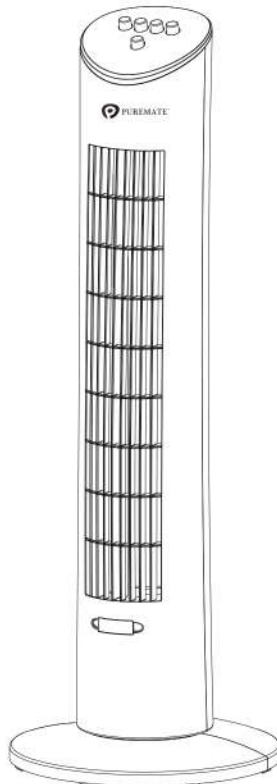




# 31-INCH OSCILLATING TOWER FAN

MODEL NO: PM 430



## INSTRUCTION MANUAL

---

---

---

---

---

Thank you purchasing the innovative PureMate 31-Inch Tower Fan PM430 we wish you many years of healthy indoor air with this efficient and effective product.

## **SAFETY OPERATION**

Ensure that all safety precautions are followed when using electrical appliances for the proper operation of the device. This instruction booklet describe the safety precautions to be observed during operation to prevent injuries to yourself, other persons and damage to the device. The content not only is suitable for this product but also suitable for electrical appliances in general.

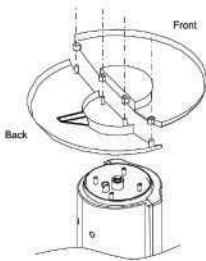
## **SAFETY INSTRUCTIONS**

- To avoid fire or shock hazard, plug the appliance directly into a 220-240V AC electrical outlet.
- Disconnect the power plug before dismantling, assembling or before cleaning.
- Keep unit away from heated surfaces and open flames.
- To protect against electrical hazards, DO NOT immerse in water or other liquids. Do not use near water.
- Children cannot recognize the hazards associated with the usage of electrical appliances. For this reason, always supervise children when they are near the unit.
- Always unplug the tower fan before moving it, opening the aroma Box, cleaning or whenever the tower fan is not in use. Be sure to pull by the plug and not the cord.
- NEVER drop or insert any object into any openings.

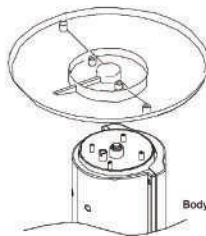
- DO NOT run cord under carpeting. DO NOT use outdoors.
- DO NOT cover cord with throw rugs, runners, or similar coverings.
- DO NOT route cord under furniture or appliances. Arrange cord away from traffic area and where it will not be tripped over.
- DO NOT operate any appliance with a damaged cord or plug, if motor fan fails to rotate, after the appliance malfunctions, or if it has been dropped or damaged in any manner. Please Call Customer Service for assistance.
- DO NOT attempt to repair or adjust any electrical or mechanical functions on this unit. Doing so will void your warranty. The inside of the unit contains no user serviceable parts. All servicing should be performed by qualified personnel only.
- Do not operate the appliance with wet hands, in order to avoid damage.
- Do not knock or shake the body of the tower fan when in use, this may cause it to stop.
- Do not use the appliance for any other purpose than its intended use.

# ASSEMBLY INSTRUCTIONS

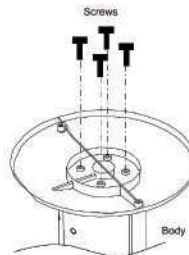
1. Remove all items of packaging from the tower fan.
2. Pass the power cord through the middle of the two base pieces.
3. Position base piece onto the support posts of the other base piece to create the base assembly.
4. Turn the tower body upside down position the base assembly onto the pedestal tube. Ensure that the pedestal tube is sitting flush in the base assembly.
5. Screw the base assembly onto the pedestal tube with the supplied screws.
6. Position the power cord into the provided cord track in the rear base.
7. Turn the tower fan back to an upright position. It is now ready for use.



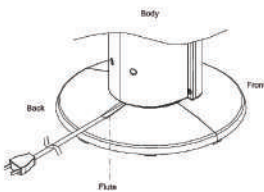
Step 1



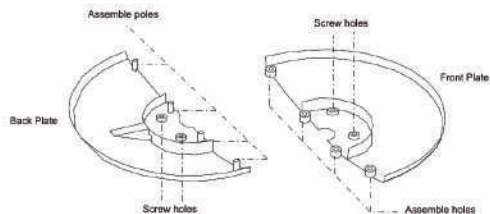
Step 2



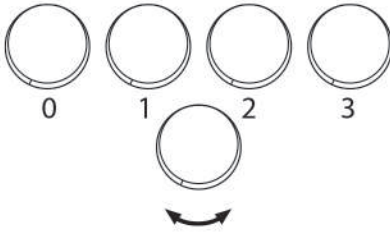
Step 3



Step 4



## CONTROL PANEL



## OPERATING INSTRUCTIONS

Push '0' to clear any previous settings.

Press your desired speed setting:

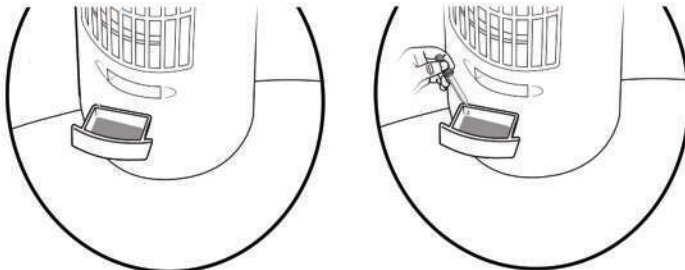
1. Low
2. Medium
3. High

Push '0' to stop the fan.

Press the oscillating button to start the fan's widespread oscillation. Press again to stop oscillation.

## THE USAGE OF FRAGRANCE BOX

In the front of the fan, there is a small box below the vent. There is a sponge inside the fragrance box. Take out the box and add some fragrance on the sponge if you would like the wind to blow with fragrance.



## **CLEANING AND MAINTENANCE**

- Always disconnect the cord from the electrical outlet when cleaning your fan.
- Light accumulated dust may be removed from the fan with a soft cloth or vacuum cleaner using the dusting brush attachment.
- Wipe the exterior surfaces of the fan occasionally with a cloth moistened (not dripping wet) with a mild soap solution. Dry the case thoroughly with a soft dry cloth before operating the fan.
- Avoid the use of gasoline, benzine, thinner etc as they may result in damage to the fan.
- Store the fan in a clean dry place when not in use.

**CAUTION! Do not immerse the unit in water or allow water to drip into the interior of the fan housing as this could create a fire or electric shock hazard.**

**WARNING! Do not attempt to open or repair the unit yourself. Doing so could void the warranty and cause damage or personal injury**

## **WARRANTY & SERVICE**

This product is covered with PureMate product and labour warranty for 12 months from the date of its original purchase. If any problems occur, please contact the PureMate Customer Care Centre in your country via the contact information listed in this User Guide. We can only provide after sales service for products that are sold by PureMate or PureMate authorized retailers and distributors. If you have purchased your unit from a different place, please contact your seller for return and warranty issues.

## SPECIFICATIONS

Model:	PM-430
Power Supply:	220 to 240V 50Hz
Power Consumption:	60W [High Setting]
Noise Level:	<_54dB
Certifications:	UKCA , CE , Rohs
Dimensions:	29 x 14 x 78.5 cm
Net Weight:	3 kg
Oscillation:	70 degrees
Warranty:	1 Year

## DISPOSAL OF THIS DEVICE



At the end of the product life cycle, you should not throw this machine into the normal household garbage but bring the product to a collection Point for the recycling of electrical and electronic equipment.

## FIND US ONLINE





**31-INCH OSCILLATING TOWER FAN | MODEL NO-PM 430**

Super Tech Health Limited  
129 Shady Lane  
Great Barr  
Birmingham  
West Midlands  
B44 9ER  
United Kingdom

**[WWW.PUREMATE.CO.UK](http://WWW.PUREMATE.CO.UK)**