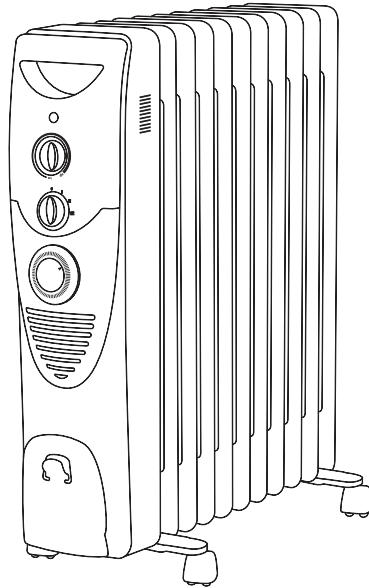




2500W Oil Filled Radiator INSTRUCTION MANUAL



Model NO: PM 1515

⚠ WARNING! Ensure that all safety precautions are followed when using electrical appliances for the proper operation of the device. This instruction booklet describes the safety precautions to be observed during operation to prevent injuries to yourself, other persons and damage to the device. The content not only is suitable for this product but also suitable for electrical appliances in general.

IMPORTANT!

Do Not Use This Oil Filled Radiator Until You Have Read This Entire Manual Thoroughly and Keep in a safe place for future reference.

This product is only suitable for well insulated spaces or occasional use.

Thank you for purchasing the innovative product the PureMate 2500W Oil Filled Radiator. We wish you many years of healthy indoor air with this efficient and effective product.

SAFETY INSTRUCTIONS

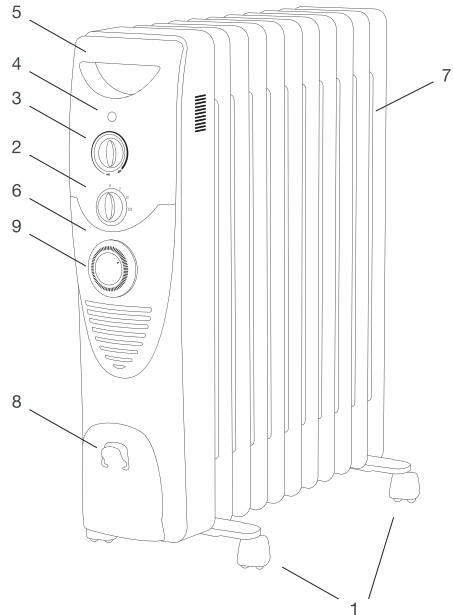
WARNING: To avoid the risk of electrical shock, fire or injury to people, always make sure the heater is unplugged from the electrical outlet before relocating, servicing, or cleaning it.

- This heater is intended for indoor use. Do not use outdoors.
- Never leave this unattended while in use. Always turn the heater off and unplug when not in use.
- Do not use near water or expose the heater to water. - Keep the heater out of reach of children and pets. Children should be supervised to ensure that they do not play with the heater.
- Do not use the heater while sleeping or place it near a person who is sleeping.
- Do not place this heater near flammable materials, surfaces or substances. Keep combustible materials, such as furniture, pillows, bedding, papers, clothes, and curtains at least 3 feet (0.9m) from the heater.
- Use the heater in a well-ventilated area.
- This heater is hot when in use. To avoid burns, do not let bare skin touch hot surfaces. Use gloves or oven mitts to avoid serious injury. Allow the heater to thoroughly cool before handling.
- Never insert fingers or metal objects into the vents or openings of the heater.
- Never cover the heater. Do not use this heater to dry or heat clothes.
- Do not cover the power cord. Arrange the cord where it will not be a trip hazard.
- To avoid a circuit overload when using this heater, do not operate another high-wattage heater on the same electrical circuit.
- This heater is filled with a precise quantity of special oil. Repairs requiring opening of the oil container are only to be made by the manufacturer or their service agent who should be contacted if there is an oil leak.
- The heater should not be used in a room of which the floor area is less than 5 m².
- Use this heater only as described in this manual. Any other use not recommended by the manufacturer may cause fire, electric shock, or injury to persons.

- Allow the heater to completely cool before handling or cleaning it.
- Ensure the heater is in the "0" OFF position and the power cord is unplugged from the electrical outlet before cleaning the heater.
- Do not allow water or other liquids to run into the interior of the heater, as this could create a fire and/or electrical hazard.
- Do not use any abrasive cleaners or solvents, as heater damage will occur.

COMPONENTS

- 1 Castor Wheels
- 2 Power Switch Dial
- 3 Thermostat Dial
- 4 Indicator Light
- 5 Carry Handle
- 6 Front Cover
- 7 Radiator Fins
- 8 Cord Storage
- 9 24 Hour Timer



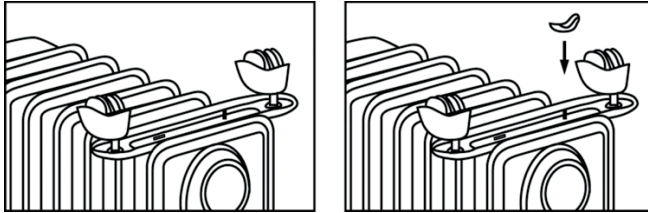
SAFETY CONTROLS (THERMAL CUT-OFF)

This heater has two levels of overheat protection.

1. Automatic thermal cut-off: Switches off the heater in the event of overheating or malfunction and resets it once the temperature drops to a normal level.
2. Thermal fuse: In the event that the automatic thermal cut-off fails to operate, the heater has a thermal fuse which will cut the power. This is a non-resettable switch which will have to be professionally replaced.

ASSEMBLY

1. Unpack the castor wheels and arc-shaped brackets from the heater packaging.
2. Turn the radiator upside-down on a scratch-free and stable surface to prevent damage to the paint finish or your floor surfacing.
3. Fit the two (2) castor wheels onto the radiator by placing the arc-shaped brackets between the outermost radiator fins on each side of the radiator.
4. Securely fasten the two (2) castor wheels onto the radiator by screwing two (2) wing nuts onto each foot.



5. Turn the radiator back upright once the castor wheels have been fitted.

CAUTION: Only operate the radiator when in its normal upright position with the castor wheels fitted to the bottom of the unit.

OPERATING INSTRUCTIONS

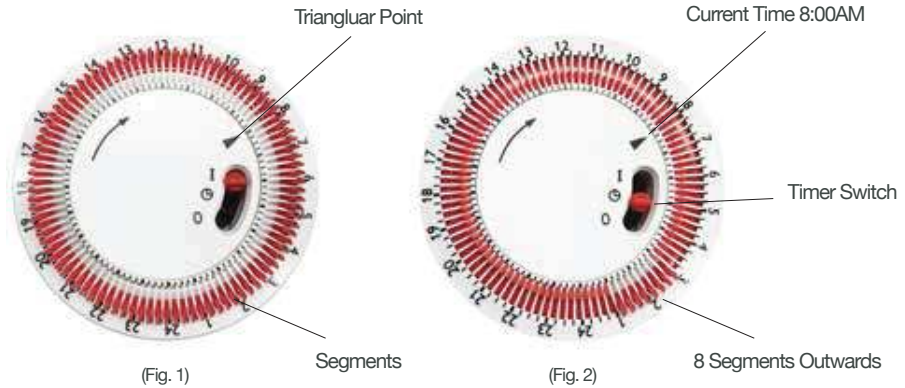
1. Place the heater upright on a flat, steady and heat-resistant surface.
2. Turn the thermostat dial anti-clockwise to LOW and ensure the power switch is '0' OFF.
3. Insert the plug into a suitable socket.
4. Turn the power switch dial clockwise to the desired power:
 - 'I' - Low Heat
 - 'II' - Medium Heat
 - 'III' - High Heat
5. Turn the thermostat dial clockwise until you hear a click and the light turns on. The position of the click indicates the temperature of the room. Turning the thermostat clockwise will keep the radiator on until the room gets warmer. Turning it anti-clockwise will turn it off until the room has cooled to a lower temperature and then it will switch on. The radiator automatically rotates through an on-and-off cycle to maintain the current room temperature according to the thermostat's setting. It is normal for it to heat up and cool down periodically.

NOTE: IF THE HEATER DOES NOT TURN ON, ENSURE THE TIMER SWITCH IS SET TO 'I'.

6. To turn off the heater, turn the power switch dial anti-clockwise to "0" OFF.
7. Unplug the heater from the electrical outlet when it is left unattended or is not in use.

TIMER FUNCTION

Timer



The heater can be set to turn ON and OFF at the time you want. Before setting a timer, the clock must be set to the correct time. Turn the dial clockwise until the triangular pointer is pointing at the correct time. Do not turn the clock anti-clockwise. There are 96 segments around the dial - each representing 15 minutes of the day.

SETTING THE TIMER

1. Plug in the heater.
2. Set the power and temperature to the desired settings.
3. Turn the dial clockwise to set the clock to the current time of the day.
4. Push the segments outwards for the period you want the heater on. For example, the diagram above shows the heater will turn on between 1AM to 3AM (Fig.2).
5. Push the timer switch to the clock symbol.
6. Once you have set the segments for the desired heating period, the heater will cycle on and off according to these settings.
7. Once unplugged, the heater timer will stop and will need to be reset.

Note: When you first use the heater, all 15 minute segments should be inwards. To begin using the timer, push the segments outwards that represent the time of the day you want the heater to work. The heater will switch off again after that period has elapsed.

CLEANING TIPS

- Clean the exterior surface of the heater by wiping it with a soft, damp cloth.
- Store the heater in a clean, dry place when it is not in use.

Caution:

- Allow the heater to completely cool before handling or cleaning it.
- Ensure the heater is in the "0" OFF position and the power cord is unplugged from the electrical outlet before cleaning the heater.
- Do not allow water or other liquids to run into the interior of the heater, as this could create a fire and/or electrical hazard.
- Do not use any abrasive cleaners or solvents, as heater damage will occur.

SPECIFICATION

Model :	PM 1515
Rated Voltage :	220-240V~ 50Hz
Power Consumption:	1000W(Low Setting), 1500W(Medium Setting), 2500W(Highest Setting)
Dimensions (L x W x H):	50(L)x 24(W) x 62(H) CM
Net Weight:	11kg
Gross Weight:	12kg

DISPOSAL OF THIS DEVICE



At the end of the product life cycle, you should not throw this machine into the normal household garbage but bring the product to a collection point for the recycling of electrical and electronic equipment.

FIND US ONLINE



Model identifier(s): PM 1515							
Item	Symbol	Value	Unit	Item	Unit		
Heat output			Type of heat input, for electric storage local space heaters only (select one)				
Nominal heat output	P _{nom}	2.5	kW	Manual heat charge control, with integrated thermostat	No		
Minimum heat output(indicative)	P _{min}	1.0	kW	Manual heat charge control with room and/or outdoor temperature feedback	No		
Maximum continuous heat output	P _{max,c}	2.5	kW	Electronic heat charge control with room and/or outdoor temperature feedback	No		
Auxiliary electricity			Fan assisted heat output				
At nominal heat output			Type of heat output/room temperature control (select one)				
At minimum heat output			Single stage heat output and no room temperature control				
In standby mode			Two or more manual stages, no room temperature control				
Seasonal space heating energy efficiency		36%	With mechanic thermostat room temperature control		YES		
			With electronic room temperature control		No		
			Electronic room temperature control plus day timer		No		
			Electronic room temperature control plus week timer		No		
			Other control options (multiple selections possible)				
			Room temperature control, with presence detection				No
			Room temperature control, with open window detection				No
			with distance control option				No
			with adaptive start control				No
			with working time limitation				No
			with black bulb sensor				No
Contact details		Super Tech Health Ltd, 129 Shady Lane Birmingham B44 9ER, United Kingdom					