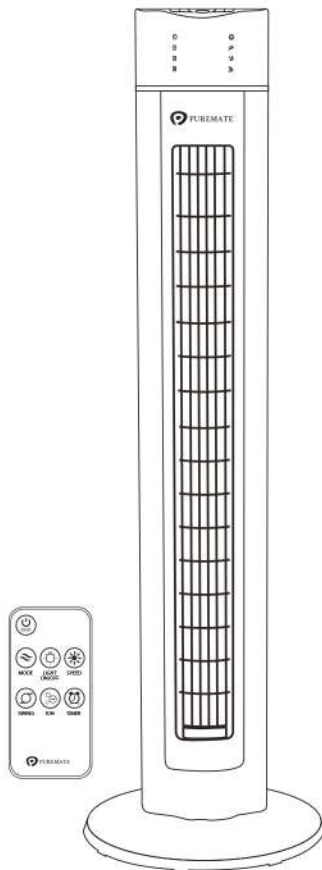




43-INCH OSCILLATING TOWER FAN

MODEL NO: PM 850



INSTRUCTION MANUAL

Thank you purchasing the innovative PureMate 43-Inch Tower Fan PM850 we wish you many years of healthy indoor air with this efficient and effective product.

SAFETY OPERATION

Ensure that all safety precautions are followed when using electrical appliances for the proper operation of the device. This instruction booklet describe the safety precautions to be observed during operation to prevent injuries to yourself, other persons and damage to the device. The content not only is suitable for this product but also suitable for electrical appliances in general.

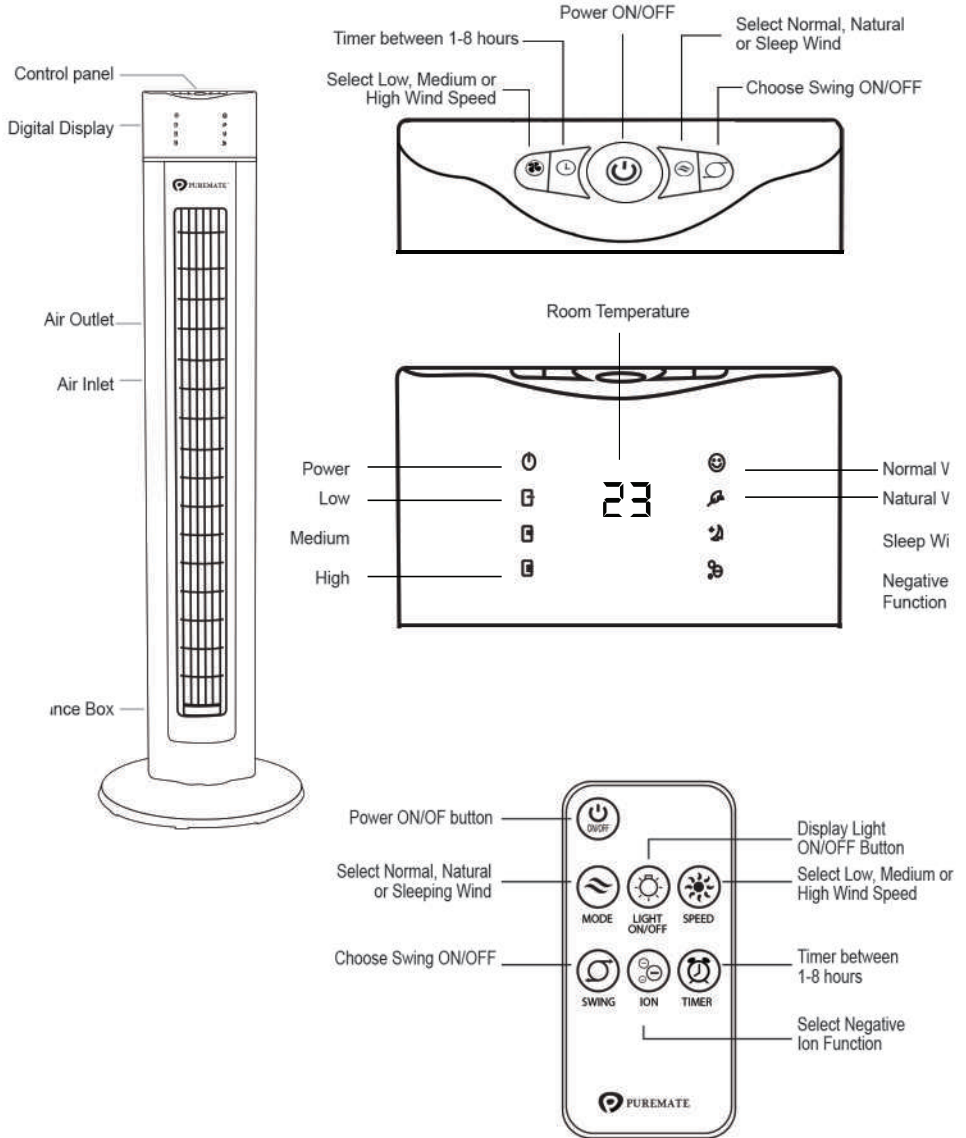
SAFETY INSTRUCTIONS

- To avoid fire or shock hazard, plug the appliance directly into a 220-240V AC electrical outlet.
- Disconnect the power plug before dismantling, assembling or before cleaning.
- Keep unit away from heated surfaces and open flames.
- To protect against electrical hazards, DO NOT immerse in water or other liquids. Do not use near water.
- Children cannot recognize the hazards associated with the usage of electrical appliances. For this reason, always supervise children when they are near the unit.
- Always unplug the tower fan before moving it, opening the aroma Box, cleaning or whenever the tower fan is not in use. Be sure to pull by the plug and not the cord.
- NEVER drop or insert any object into any openings.

- DO NOT run cord under carpeting. DO NOT use outdoors.
- DO NOT cover cord with throw rugs, runners, or similar coverings.
- DO NOT route cord under furniture or appliances. Arrange cord away from traffic area and where it will not be tripped over.
- DO NOT operate any appliance with a damaged cord or plug, if motor fan fails to rotate, after the appliance malfunctions, or if it has been dropped or damaged in any manner. Please Call Customer Service for assistance.
- DO NOT attempt to repair or adjust any electrical or mechanical functions on this unit. Doing so will void your warranty. The inside of the unit contains no user serviceable parts. All servicing should be performed by qualified personnel only.
- Do not operate the appliance with wet hands, in order to avoid damage.
- Do not knock or shake the body of the tower fan when use, otherwise it may cause stop.
- Disconnect the power plug before dismantling, assembling or before cleaning.
- Never insert fingers, pencils or any other objects through the guards whenever.
- Do not use the appliance for any other purpose than its intended use.

- The fan must not be used if the guards are not fastened according to instructions.

COMPONENTS



OPERATING INSTRUCTIONS


1. Use in a dry place, free of excessive humidity and water.
2. This unit can be operated by the control panel on the fan or by remote control in the same manner.



ON/OFF: Press this button to turn the fan on or off.



SPEED: Press these buttons to adjust the speed of the fan between 3 comfort

Low  Medium  High  and.

The speed will be indicated on the display panel.



MODE: Choose from 3 different breeze patterns:

Normal  Natural  Sleep 

The function selected will be shown on the front display. When Natural or Sleep airflows are selected the fan will continually cycle through, Low, Medium and High fan settings.



SWING: Press the oscillation button to activate the oscillation function for widespread breeze distribution. Press again to turn the oscillation function off.



TIMER: Press the timer button to activate the timer function. Each time the button is pressed the timer will be increased by 1hrs up to a maximum of 8 hours.



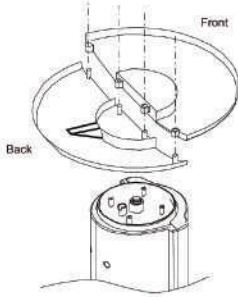
NEGATIVE ION FUNCTION: Press the oscillate  for 3 seconds to start function of negative ion function 



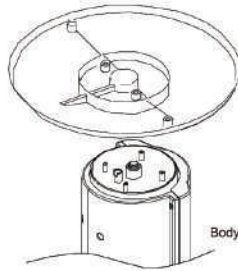
LIGHT ON/OFF: Press the light ON/OFF button on the remote control to turn off the display lights, thus entering 'Sleep Mode' To exit 'Sleep Mode' press the button again.

ASSEMBLY INSTRUCTIONS

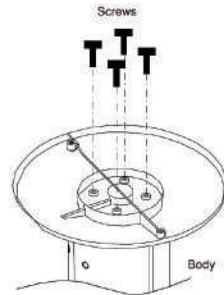
1. Remove all items of packaging from the tower fan.
2. Pass the power cord through the middle of the two base pieces.
3. Position base piece onto the support posts of the other base piece to create the base assembly.
4. Turn the tower body upside down position the base assembly onto the pedestal tube. Ensure that the pedestal tube is sitting flush in the base assembly.
5. Screw the base assembly onto the pedestal tube with the supplied screws.
6. Position the power cord into the provided cord track in the rear base.
7. Turn the tower fan back to an upright position. It is now ready for use.



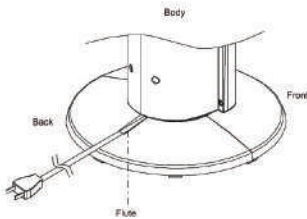
Step 1



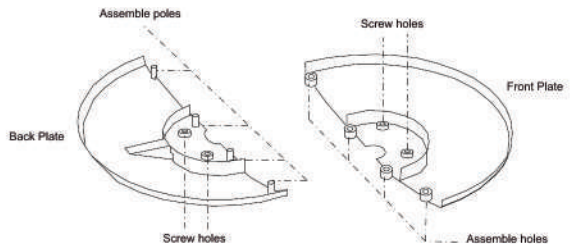
Step 2



Step 3

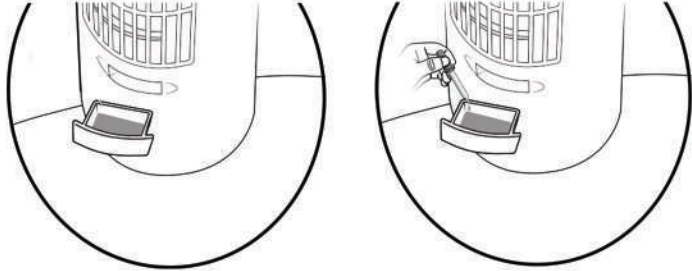


Step 4



THE USAGE OF FRAGRANCE BOX

In the front of the fan, there is a small box below the vent. There is a sponge inside the fragrance box. Take out the box and put some fragrance on the sponge if you would like the wind blow with fragrance. Please see images as below.



CLEANING AND MAINTENANCE

- Always disconnect the cord from the electrical outlet when cleaning your fan.
- Light accumulated dust may be removed from the fan with a soft cloth or vacuum cleaner using the dusting brush attachment.
- Wipe the exterior surfaces of the fan occasionally with a cloth moistened (not dripping wet) with a mild soap solution. Dry the case thoroughly with a soft dry cloth before operating the fan.
- Avoid the use of gasoline, benzine, thinner etc as they may result in damage to the fan.
- Store the fan in a clean dry place when not in use.

CAUTION! Do not immerse the unit in water or allow water to drip into the interior of the fan housing as this could create a fire or electric shock hazard.

WARNING! Do not attempt to open or repair the unit yourself. Doing so could void the warranty and cause damage or personal injury

ACCESSORY

Screws for assemble the base ; Remote control , User Manual

WARRANTY & SERVICE

This product is covered with PureMate product and labour warranty for 12 months from the date of its original purchase. If any problems occur, please contact the PureMate Customer Care Centre in your country via the contact information listed in this User Guide. We can only provide after sales service for products that are sold by PureMate or PureMate authorized retailers and distributors. If you have purchased your unit from a different place, please contact your seller for return and warranty issues.

SPECIFICATIONS

Model	:	PM850
Rated Voltage	:	220-240V / 50Hz
Watts	:	60W
Weight	:	4.3kg
Oscillation	:	70 Degrees
Warranty	:	1 Year
Dimensions	:	31.5 X 31.5 X 109 CM
Certification	:	UKCA , CE , Rohs

DISPOSAL OF THIS DEVICE



At the end of the product life cycle, you should not throw this machine into the normal household garbage but bring the product to a collection Point for the recycling of electrical and electronic equipment.

FIND US ONLINE





43-INCH OSCILLATING TOWER FAN | MODEL NO-PM 850

Super Tech Health Limited
129 Shady Lane
Great Barr
Birmingham
West Midlands
B44 9ER
United Kingdom

WWW.PUREMATE.CO.UK